

ITALO·IQ

Elevate your hair game!

MAESTRO

INTELLIGENT PROFESSIONAL HAIR DRYER

Congratulations on your purchase and we hope you enjoy your hair dryer for years to come! Please make sure you read this quick user guide thoroughly before use.

The MAESTRO Intelligent Professional Hair Dryer elevates your blow-out experience with its advanced innovative features. Equipped with three heat settings, a cool blast feature, three adjustable airflow speeds, a Digital LED Intelligent Temperature Display, and an impressive 110,000 RPM, this meticulously designed hair dryer ensures a super fast hair drying process.

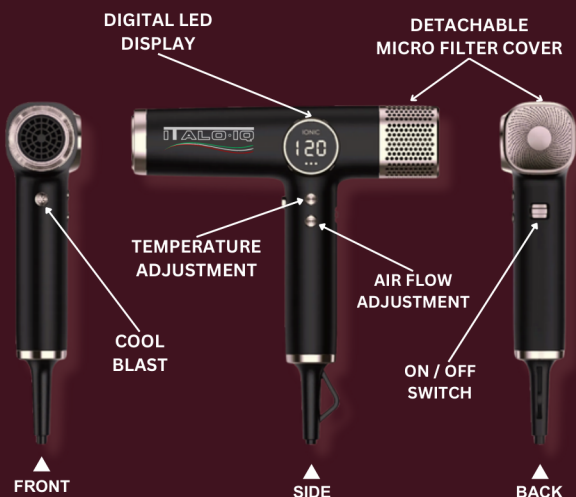
Utilizing negative ionic technology and a strong, steady airflow, this hair dryer delivers silky smooth results without causing damage or frizz. Perfect for all hair types, this lightweight and powerful dryer is a must-have for hair all enthusiasts everywhere.



QUICK USER GUIDE

STYLING TIPS

- Ensure your hair is clean and tangle-free
- Plug in the hair dryer and turn ON using the ON/OFF switch button.
- Adjust to the desired heat temperature and air flow speed.
- Divide hair into small sections for easier drying.
- Start close to root and work your way to the ends. Repeat as necessary, allowing time for hair to cool in between passes.
- When finished, turn hair dryer off and unplug from the socket.
- Store hair dryer at a cool and dry place when not in use



NEGATIVE IONS



DIGITAL LED DISPLAY



BRUSHLESS MOTOR



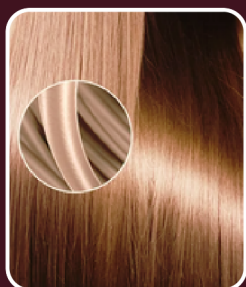
MEMORY FUNCTION



MAGNETIC ATTACHMENT



OVERHEAT PROTECTION



Ionic technology produces millions of negatively charged ions that break down the positively charged ions present in water preventing them from soaking into your hair shaft and causing frizz.

SELF - CLEANING FUNCTION

To initiate the self-cleaning, follow these steps:

1. Take off the micro filter cover at the back.
2. Turn switch to off position, then **PRESS** and **HOLD** Cool Blast button for 5 seconds.
3. Motor will blow air in reverse to clean the filter.
4. The cleaning lasts 10 seconds, shown on the LCD countdown.
5. When completed, put the cover back on.
6. We suggest doing this weekly to maintain your MAESTRO dryer.

OVERHEATING PROTECTION

Should something block the airflow or cover the air inlet, the hair dryer will shutdown and will display a red light warning. This protects the brushless motor from overheating.

Should this occur, unplug the hair dryer from the power outlet, remove the blockage completely. Let it cool if necessary and plug back in and continue use.

OPERATING INSTRUCTIONS

This dryer is intended for professional and consumer use. This dryer has a polarized plug (one blade is wider than the other). As a safety feature, this plug will fit into a polarized outlet only one way. If the plug does not fit securely, reverse the plug. If it still does not fit, contact a qualified electrician. Do not attempt to defeat this safety feature.

FEATURES

- Digital LED Display
- 3 temperature settings, plus Cool Blast
- 360 degree magnetic attachments
- Brushless motor
- Lightweight and ergonomic
- Ionic styling nozzles and diffuser
- Self-cleaning feature
- Ionic Technology for healthier hair

SPECIFICATIONS

Model: Maestro by ITALO. IQ
Rated Voltage: 120v
Rated Wattage: 1600W
AC Power Cord Length: 9 feet
Weight: 340g / 0.75 lbs.
Available Colors: Black or Grey
Included Accessories:

- Air Concentrator Nozzle
- Styling Nozzle
- Diffuser Nozzle

Certifications: **RoHS** **FC** **CE**

ITALO.IQ brand is owned and distributed by



ANTONIO CREMONA SALON, INC.

IMPORTANT SAFETY INSTRUCTIONS

When using electric appliances, especially when children are present, basic safety precautions should always be followed, including the following:

READ ALL INSTRUCTIONS BEFORE USE

KEEP AWAY FROM WATER.

DANGER – As with most electric appliances, electrical parts are electrically live even when switch is off.

To reduce the risk of death by electric shock:

1. Always “unplug it” immediately after using.
2. Do not use while bathing.
3. Do not place or store appliance where it can fall or be pulled into a tub or sink.
4. Do not place in or drop into water or other liquid.
5. If an appliance falls into water, “unplug it” immediately. Do not reach into the water.

WARNING – To reduce the risk of burns, electrocution, fire or injury to persons:

- Use the dryer only for the purpose described in this guide to prevent accidents, misuse, damage, or malfunction.
- Use this appliance only for its intended use as described in this manual.
- This appliance should never be left unattended when plugged in.
- Close supervision is necessary when this appliance is used by, on, or near children or individuals with certain disabilities.
- Do not use attachment not recommended by the manufacturer.
- Never operate this appliance if it has a damaged cord or plug, if it is not working properly or it has been dropped, damaged, or dropped into water. Return the appliance to a service center for examination and repair.
- Plug the dryer into an electrical outlet of AC 120V.
- KEEP AWAY FROM WATER to prevent fire, electric shock, damage, or malfunction.
- KEEP AWAY FROM CHILDREN.
- Do not handle the dryer or cord with wet hands, as this may cause electric shock, personal injury and/or property damage.
- Keep the cord away from heated surfaces.
- DO NOT WRAP THE CORD AROUND THE DRYER. Allow the cord to hang loose and straight at the point of entry into the dryer.
- Never drop or insert objects into any of the dryer openings.
- Do not use outdoors or operate where aerosol (spray) products are being used or where oxygen is being administered.
- DO NOT USE WHEN CORD HAS BEEN DAMAGED OR IF PLUG IS LOOSE.
- DO NOT REPAIR, TAMPER WITH, OR TRY TO RECONSTRUCT the dryer or electric shock, personal injury, property damage, malfunction, or accidents may result.
- When inserting or pulling out the plug, hold the plug firmly to prevent the cord from peeling and to prevent accidents, misuse, personal injury, property damage, or malfunction.
- Stop using immediately if you smell an offensive odor. If ignored, it could cause a fire or other accidents.
- Do not keep the dryer in a damp place, such as a bathroom, or it may malfunction.
- Stop using the dryer and remove from the power source when there is an earthquake or thunder.

- Unplug the dryer from the power source when cleaning or wiping to prevent fire or electric shock.
- Never block the air openings of the dryer or place it on a soft surface, such as a bed or couch, where the air openings may be blocked.
- Keep the air openings free of lint, hair, etc.
- Never use while sleeping.
- Never drop or insert any object into any opening or hose.
- Do not use an extension cord with this appliance.
- Avoid multiple cables to a plug.

SAVE THESE INSTRUCTIONS

- Do not direct hot air toward eyes or other heat sensitive areas.
- Attachments may be hot during use. Allow them to cool before handling.
- Do not place the dryer on any surface while it is operating.
- While using the appliance, keep your hair away from the air inlets.
- Do not operate with a voltage converter.

THE ALCI PLUG

This appliance is equipped with ALCI (appliance leakage current interrupter) safety device specifically engineered for safety. ALCI plug is intended to interrupt its load circuit when there is an electrical fault to the appliance. It is for household use and may be plugged into a standard AC electrical outlet (ordinary household current). The ALCI safety device in this unit is built into the plug. This device will make it inoperable under some abnormal conditions, such as accidental immersion in water. If the appliance is immersed in water, do not attempt to reset the ALCI safety device. The ALCI safety device is equipped with a test button so that its operation can be checked.

TO TEST

1. Press the Reset button on the ALCI safety device.
2. Plug your hair-dryer into an AC outlet then press the Test button.
3. The Reset button will pop out. This verifies the safety device is operating properly. If the Reset button does not pop out, do not use the unit. Return it immediately for service.
4. Press the Reset button to reactivate the ALCI safety device. Your hair-dryer is ready for use. Repeat this procedure every time you use the hair-dryer to confirm that the safety device is operating properly.

SPECIAL ATTENTION

If the unit detects an electrical shock hazard, it will immediately shut off. To restore power, press the Reset button on the ALCI safety device to reactivate the circuit.

Test the ALCI plug before each use as noted:

1. Press Test button.
2. Reset button will pop up. If it doesn't, do not use appliance.
3. Press Reset button to test for power.

If the ALCI plug is damaged, it must be replaced by the manufacturer or its service agent in order to avoid a hazard.

WARRANTY RETURN PROCEDURE

For all warranty issues, please email us at sales@antoniocremonasalon.com for further instructions and return address.

WARRANTY GUIDE

IMPORTANT WARRANTY NOTICE

A purchase receipt is required for all warranty claims.

(Please read details below)

IMPORTANT: Warranty valid only when appliance is purchased from an authorized from Antonio Cremona Salon or authorized distributor. Warranty valid only for the MAESTRO by ITALO.IQ Professional Hair Dryer.

Terms and conditions may vary depending on salon/authorized retailer's individual exchange or return policy.

LIMITED 12-MONTH WARRANTY

Our 12-month warranty covers tools within the U.S. (Alaska, Hawaii, Puerto Rico, and Continental U.S.) and Canada only, and only when purchased from Antonio Cremona Salon or an authorized distributor. MAESTRO by ITALO.IQ Professional Hair Dryer warranty covers the appliance against defects in material or workmanship for 12 months from the date of purchase.

Sorry, no refunds will be given.

THIS WARRANTY DOES NOT COVER

- Damage due to any modifications to the appliance
- Normal wear and tear, which includes but is not limited to, housing or barrel scratches, and shorts or cuts in the power supply cord or plug
- Damage due to misuse and abuse such as:
 - Dropping
 - Wrong voltage supply
 - Neglecting safety precautions
- Tampering, such as repair or attempted repair by unauthorized party
- Neglect or lack of proper maintenance
- Damage to cord. Please do not wrap the cord around the iron, as it can result in the cord breaking.

PLEASE BE ADVISED THAT IMPROPER USE OR MAINTENANCE OF YOUR APPLIANCE CAN RESULT IN DAMAGE TO PROPERTY OR PERSONAL INJURY, INCLUDING GREAT BODILY HARM. IT IS IMPORTANT TO FOLLOW THE INSTRUCTIONS. FAILURE TO DO SO CAN VOID THIS WARRANTY.

WITH PROOF OF PURCHASE & WITHIN 12 MONTHS

Exchange of defective appliance is at Antonio Cremona Salon Inc.'s discretion. If your MAESTRO by ITALO.IQ Professional Hair Dryer appliance fails to operate properly within the first 12 months of purchase, consumers can return the hair dryer to the salon where it was purchased (terms and conditions may vary depending on salon/authorized retailer's individual exchange or return policy), and stylists can return it to their distributor, making sure to bring the original proof of purchase. Otherwise, please email us at sales@antoniocremonasaloon.com for further instructions. For replacement of appliance under warranty, there is no charge to send your replacement appliance to you.

Repair or servicing of defective appliances is not offered.

ANY IMPLIED WARRANTIES, OBLIGATIONS, OR LIABILITIES, INCLUDING BUT NOT LIMITED TO THE IMPLIED WARRANTY OF MERCHANTABILITY AND FITNESS FOR A PARTICULAR PURPOSE, SHALL BE LIMITED TO THE 12-MONTH DURATION OF THIS WRITTEN LIMITED WARRANTY. IN NO EVENT SHALL ANTONIO CREMONA SALON, INC. BE LIABLE FOR ANY SPECIAL, INCIDENTAL, OR CONSEQUENTIAL DAMAGES FOR BREACH OF THIS OR ANY OTHER WARRANTY, EXPRESSED OR IMPLIED, WHATSOEVER.

This warranty gives you specific legal rights, and you may also have other rights, which may vary from state to state both in the United States. Guaranteed ONLY when purchased within the professional beauty salon industry, NOT from a drugstore, supermarket, or other unauthorized source.